

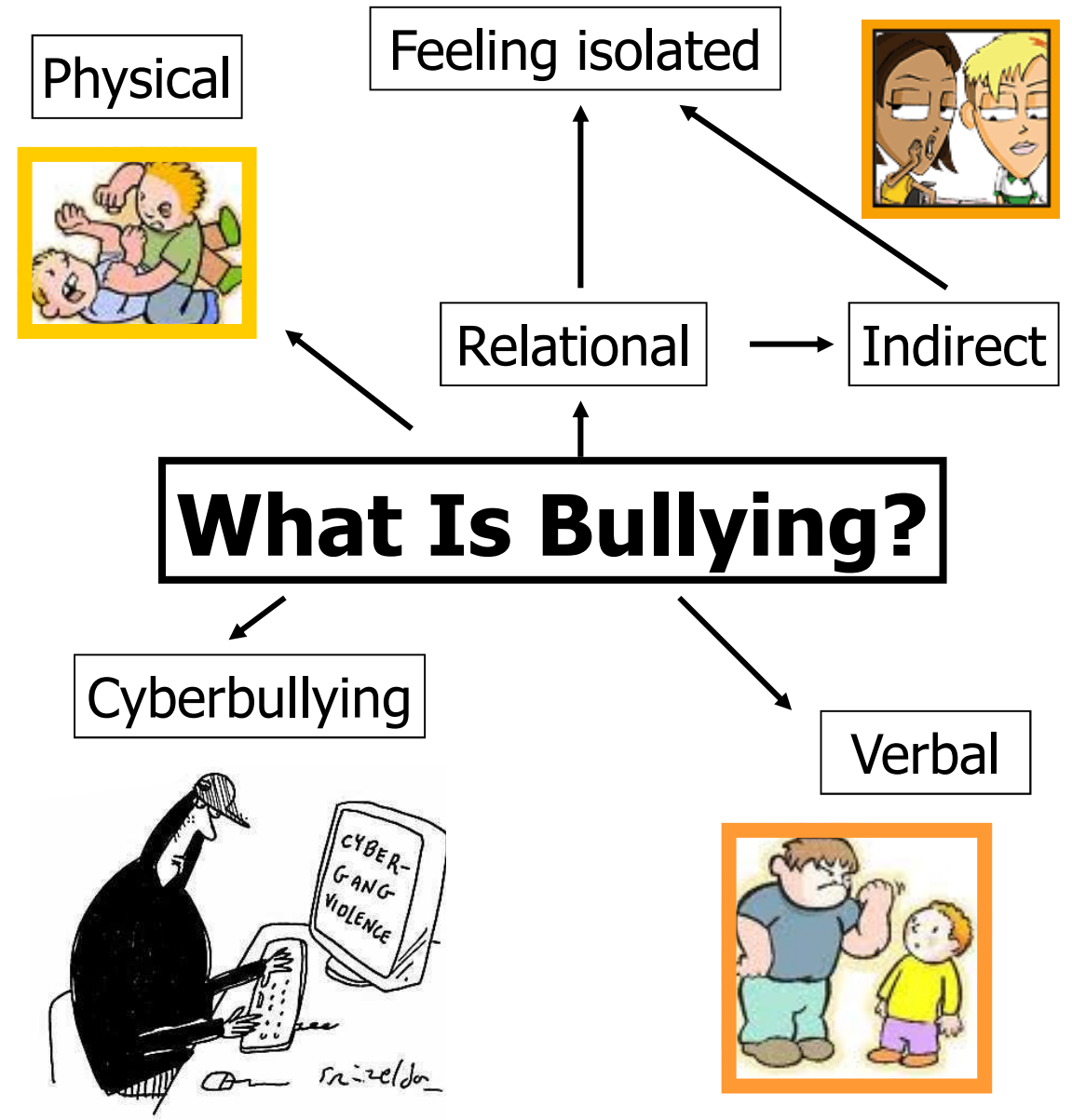
Bullying will NOT be tolerated @ King Ed

Bullying will NOT be tolerated @ King Ed

Bullying will NOT be tolerated @ King Ed

Our Anti Bullying Policy @ King Ed

By students...for students



We all know the serious effect bullying can have on a person's self esteem, their emotional state and in some cases their mental health. We are therefore aiming to... **stamp bullying out!**

Bullying will NOT be tolerated @ King Ed

Bullying will NOT be tolerated @ King Ed

Bullying will NOT be tolerated @ King Ed

Bullying will NOT be tolerated @ King Ed

Bullying happens in most places to a greater or lesser extent. All staff and most students in our college community strongly believe that every member has the right to feel **valued, equal, respected** and therefore **SAFE**. Members need to feel safe in order to fulfil their academic and personal potential. We aim for all our students to leave feeling confident and ready for the 'adult' world.

What you should do if you either WITNESS bullying or are a VICTIM of bullying?



Report it straight to a member of **staff** and they will deal with it in a **manner that suits you.**



Tell a **family relative** so they can contact the school and talk to the teacher about the issues.

See a careers advisor in the library where you can discuss how **best to deal with it.**

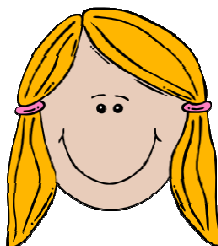


Use the school 'anti-bullying' help email to report if you've witnessed or been victim to bullying

antibullying@kinged.org.uk

Report it to one of the **sixth form anti-bullying mentors.** They will be around at lunch time in room....

Tell a **friend** so they can help encourage you to report it to the **person of your choice**



Bullying will NOT be tolerated @ King Ed

Bullying will NOT be tolerated @ King Ed

Bullying will NOT be tolerated @ King Ed

Bullying will NOT be tolerated @ King Ed

An Ode to the Bullies

By Brad, Kyle, Jim and Demi. Year 10 Anti-Bullying Committee

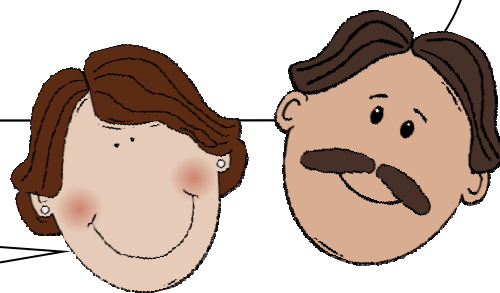
Bullying is whack...so get on the right track
Use your brain, being a bully won't gain
Bullying is the lock, You be the key
So if you witness it
Report it...
IMMEDIATELY!

Make sure you make the grade
and join the anti-bullying crusade
We all know that bullies are NOT cool,
they're just plain and simple CRUEL
...and we all know ...meanness is a sign of weakness!

What's the moral of this story?

Let's **ALL TAKE A STAND** and lend a hand
Because we all know in our hearts that
BULLYING IS BAD, so don't make others feel sad

Something for
parents...



We take issues of bullying very seriously at King Edward VII. Students and staff at the college would greatly appreciate your full support of our anti-bullying policy by discussing any necessary issues of bullying with your child at home, whether they have been the perpetrator OR the victim. A signature would indicate your support and that you've read and agreed with the aims of our anti-bullying policy.

Thank you.

Year 10 anti-bullying committee

I agree with and support King Edward's anti-bullying campaign

..... Parent signature

Bullying will NOT be tolerated @ King Ed